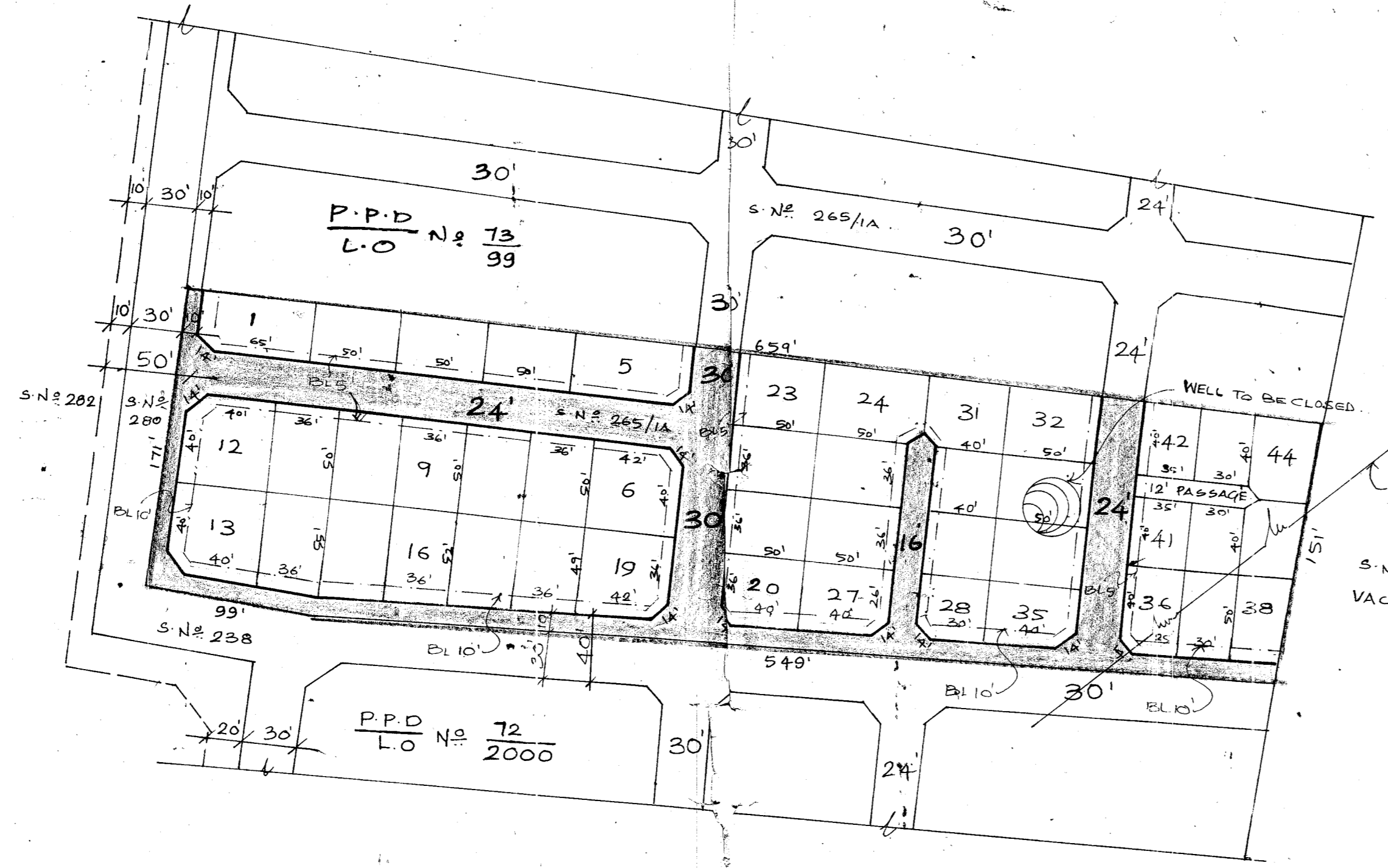


S.No. 265/3 of 19



TOTAL EXTENT (2.40 AC) : 9712 M<sup>2</sup>  
 ROAD AREA : 2349 M<sup>2</sup>  
 N<sup>o</sup> OF PLOTS (1 to 44) : 44 N<sup>o</sup>s

LEGEND:

- SITE BOUNDARY.
- PROPOSED ROAD.
- EXISTING ROAD.

1. SPLAY 10' x 10'.
2. MEASUREMENTS INDICATED ARE EXCLUDING SPLAY DIMENSION.
3. ROAD AREA ALREADY HANDED OVER TO THE LOCAL BODY VIDE GIFT DEED DOC. N<sup>o</sup> 3618/2001, DATED 07/09/2001. & RECTIFICATION GIFT DEED DOC N<sup>o</sup> 3967/2001, DATED 28/8/2001.

KATTANKOLATHUR PANCHAYAT UNION

LAYOUT OF HOUSE SITES IN S.N<sup>o</sup> 265/3 OF MANNIVAKKAM VILLAGE.

SCALE : 66 FEET TO AN INCH.

P.P.D No 66 (10)  
 L.O 2001

APPROVED

VIDE LETTER N<sup>o</sup> : L/15895/2001.  
 DATED : 05/10/2001.

FOR MEMBER SECRETARY  
 CHENNAI METROPOLITAN  
 DEVELOPMENT AUTHORITY.

