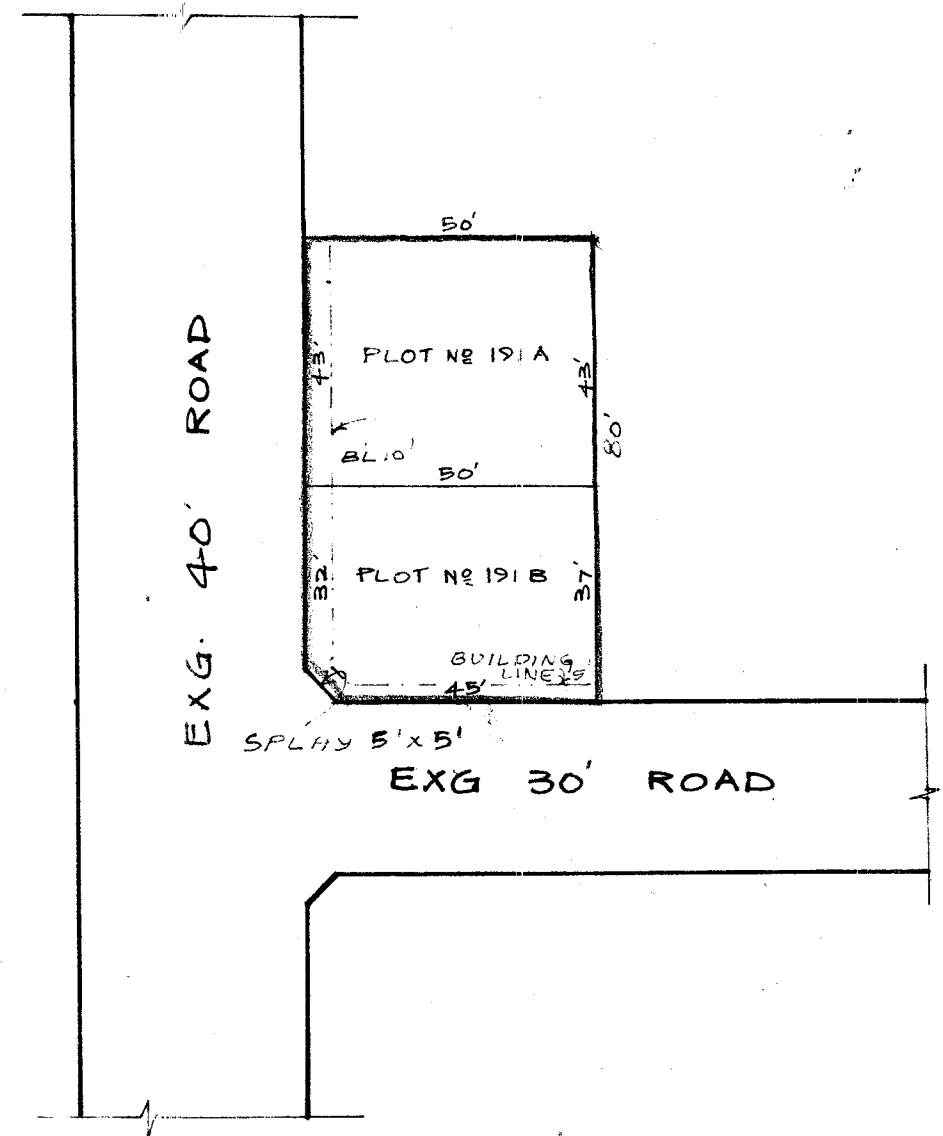


21



TOTAL EXTENT : 370.39 M²
 NO OF PLOTS : 2 Nos (191A & 191B)

LEGEND
 [Symbol] SITE BOUNDARY
 [Symbol] EXISTING ROAD

P.P.D No. : 21
 L.O : 2001
 APPROVED
 VIDE LETTER No. : LI/35881/2000
 DATED : 4-4-2001

OFFICE COPY

FOR MEMBER SECRETARY
 CHENNAI METROPOLITAN
 DEVELOPMENT AUTHORITY



ST. THOMAS MALAI PANCHAYAT UNION
 SUB-DIVISION OF HOUSE SITES IN S.No 91/17,
 PLOT No 191 OF NEELANGARAI VILLAGE.
 SCALE: 33 FEET TO AN INCH.