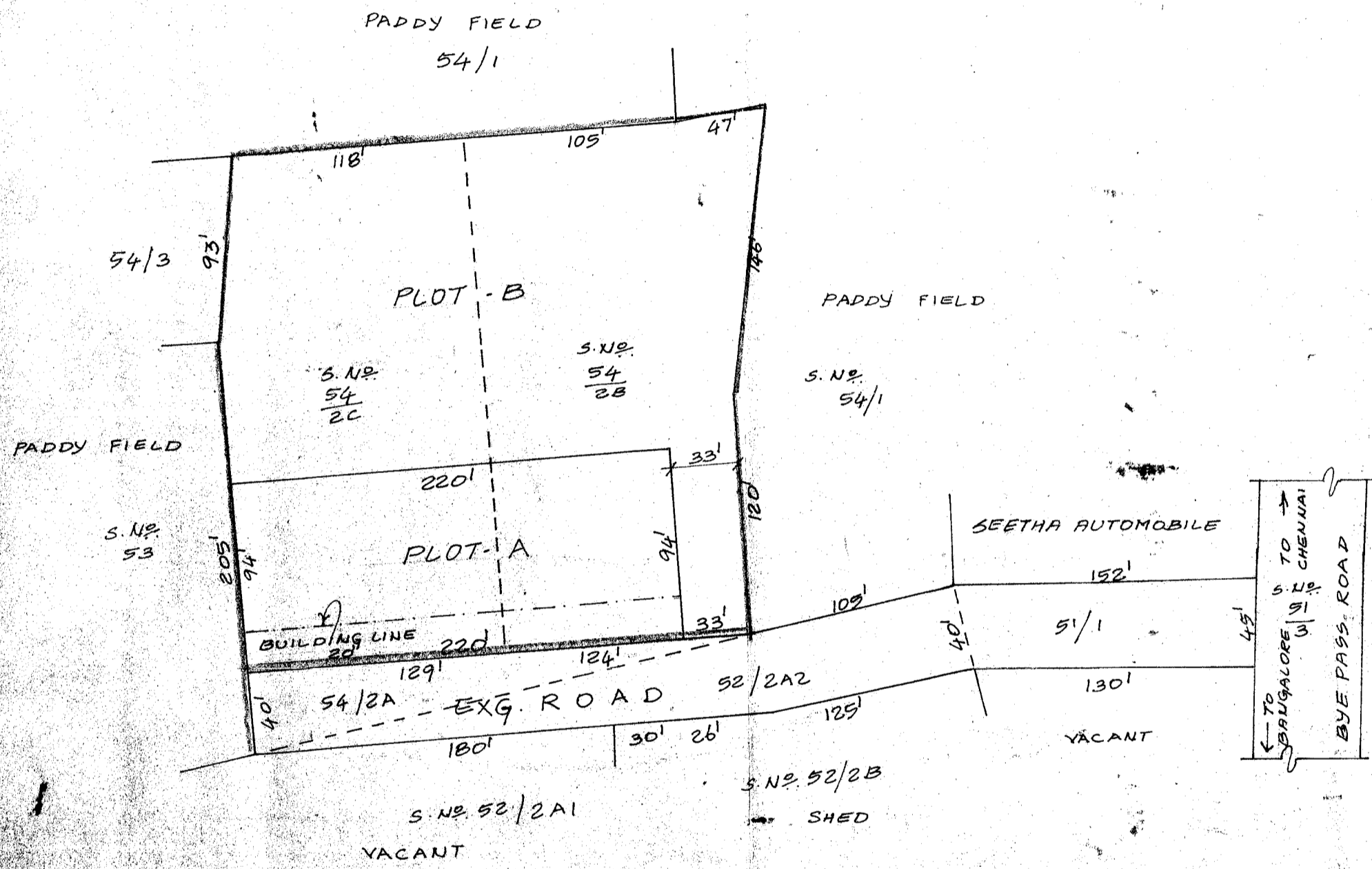


TOTAL EXTENT (1.5 AC): 6070 M²
 NO. OF PLOTS : 2 NOS



POONAMALLEE TOWN PANCHAYAT
 SUB-DIVISION OF INDUSTRIAL PLOTS IN S.NO: 54/2B &
 54/2C OF ARIYAMARUNDANALLUR VILLAGE.
 SCALE : 66 FEET TO AN INCH.

P.P.D L.O No : 100 / 2000
APPROVED
 VIDE LETTER NO : L1/29746/2000
 DATED : 19/12/2000
OFFICE COPY
 FOR MEMBER SECRETARY
 CHENNAI METROPOLITAN
 DEVELOPMENT AUTHORITY

